

THE COMPLEX TRIAL PROTOCOL:  
A BRAINWAVE ANALYSIS TECHNIQUE  
TO DRAW OUT EVIDENCE FROM  
THE STORED MEMORY OF SUSPECTS AND  
WITNESSES OF CRIME

Michel Funicelli, Ph.D.

Canterbury Christ Church University

18 January 2024

Canterbury Center for Policing Research (CCPR)

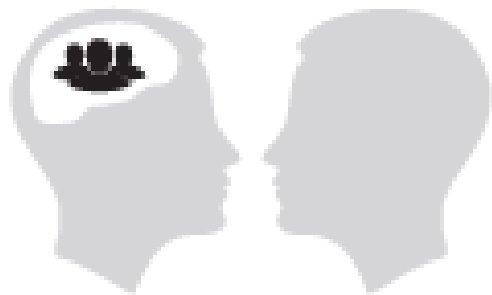




# A PROBLEM IN UK (WORLDWIDE?) POLICING

**75%** of overturned wrongful convictions in the US cite eyewitness misidentifications as a factor

Eyewitness testimony has been scientifically proven to be generally inaccurate for many reasons including:



CROSS-RACIAL  
IDENTIFICATION DIFFICULTIES

Source: Innocence Network



MEMORY  
DEGRADATION

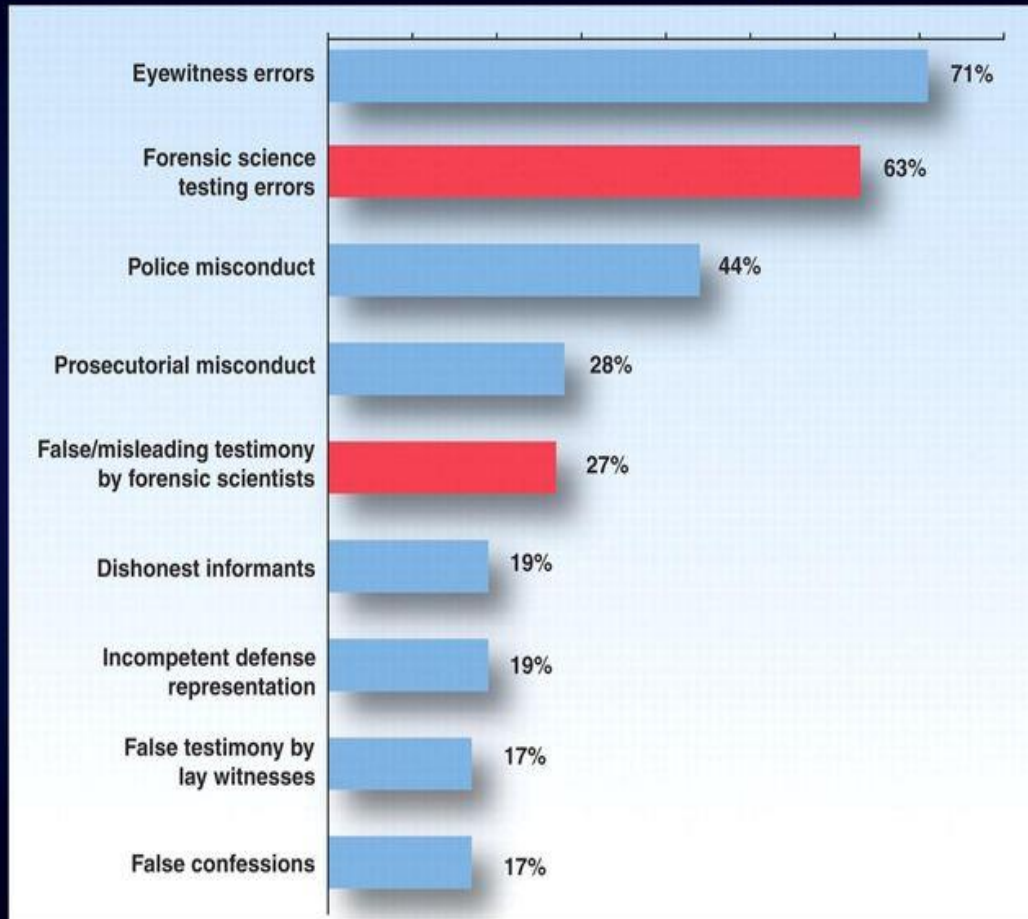


WEAPON  
FOCUS



# How Prevalent is the Problem?

## Factors associated with wrongful convictions



Saks & Koehler,  
*Science* (2005)

- 71% - Based on 300 cases overturned by post conviction DNA evidence (New England Innocence Project, n.d.)
- Estimate of 100 persons/year in the UK are wrongly convicted (Mojtahedi, 2016)



# THE WALL OF INNOCENCE

## THIS IS WHY I DO RESEARCH

WRONGFULLY CONVICTED BECAUSE OF EYEWITNESS MISIDENTIFICATION



William Mills  
2021-2022

1 YEAR IN PRISON FOR NOTHING –  
but sentenced to 9 years



Andrew Malkinson  
2004-2020

16 YEARS IN PRISON FOR NOTHING



Miguel Solorio  
2000-2023

23 YEARS IN PRISON FOR NOTHING



Leonard Mack  
1976-1984

7.5 YEARS IN PRISON FOR NOTHING



Tyrone Day  
1997-2023

26 YEARS IN PRISON FOR NOTHING



Sydney Holmes  
1989-2023

34 YEARS IN PRISON FOR NOTHING



Thomas Raynard James  
1991-2023

32 YEARS IN PRISON FOR NOTHING



Kevin Strickland  
1979-2021

42 YEARS IN PRISON FOR NOTHING



Barry George  
2000-2007

7 YEARS IN PRISON FOR NOTHING

## Nearly 200 years!!





# EEG-Based Complex Trial Protocol (CTP) : A Potential Solution

# Lie Detection?



# Brain Fingerprinting?

OR





# EDMOND LOCARD

(1877-1966)

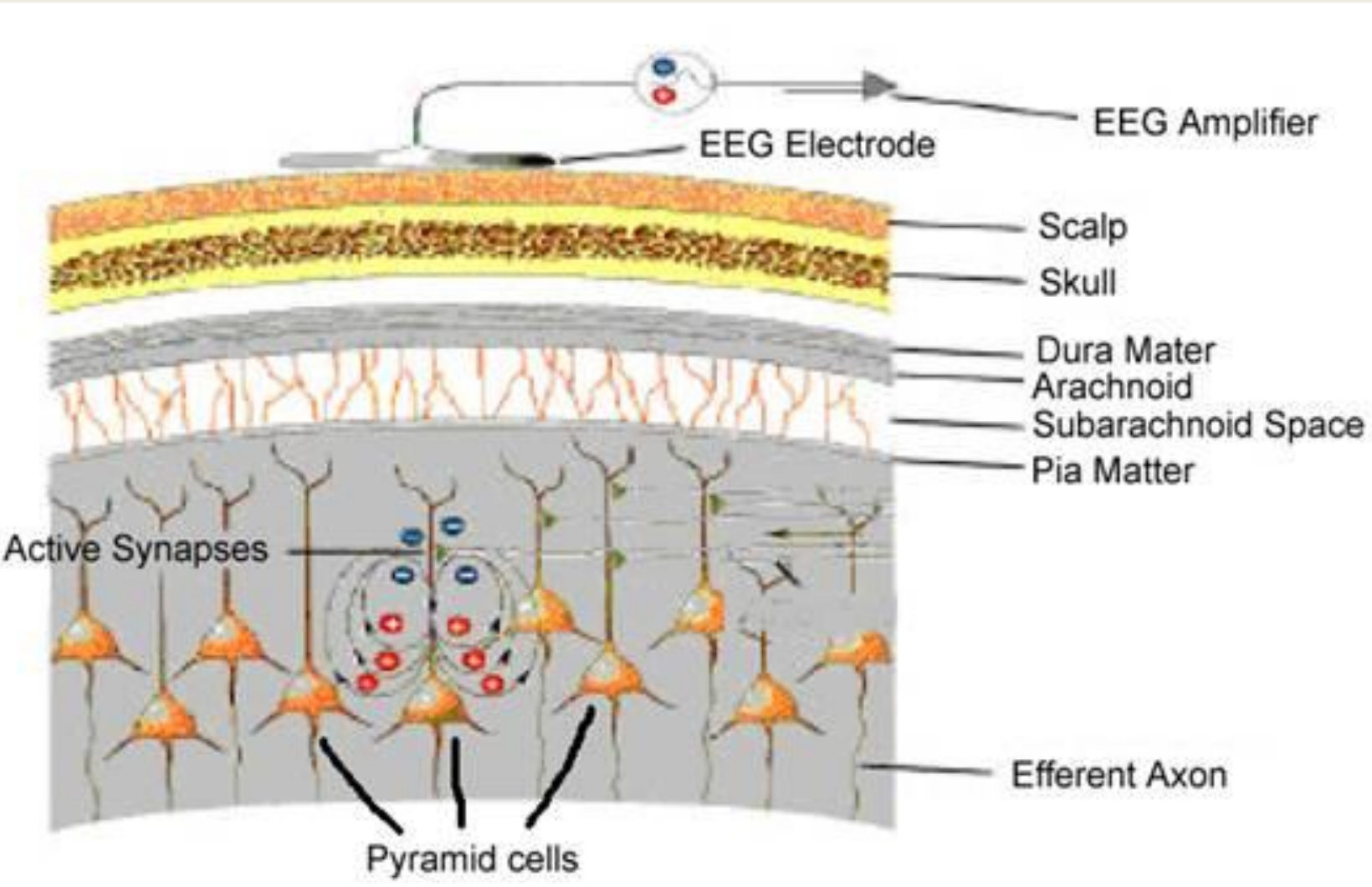


A person with long dark hair is seen from behind, sitting at a desk in a control room. They are looking through a large glass window into a laboratory. The laboratory contains several long tables with chairs, microphones, and various pieces of equipment. The scene is dimly lit, with the primary light source being the window. The text 'Complex Trial Protocol' and 'The Independent Lab Validation' is overlaid in white serif font on the lower half of the image.

# Complex Trial Protocol

## The Independent Lab Validation

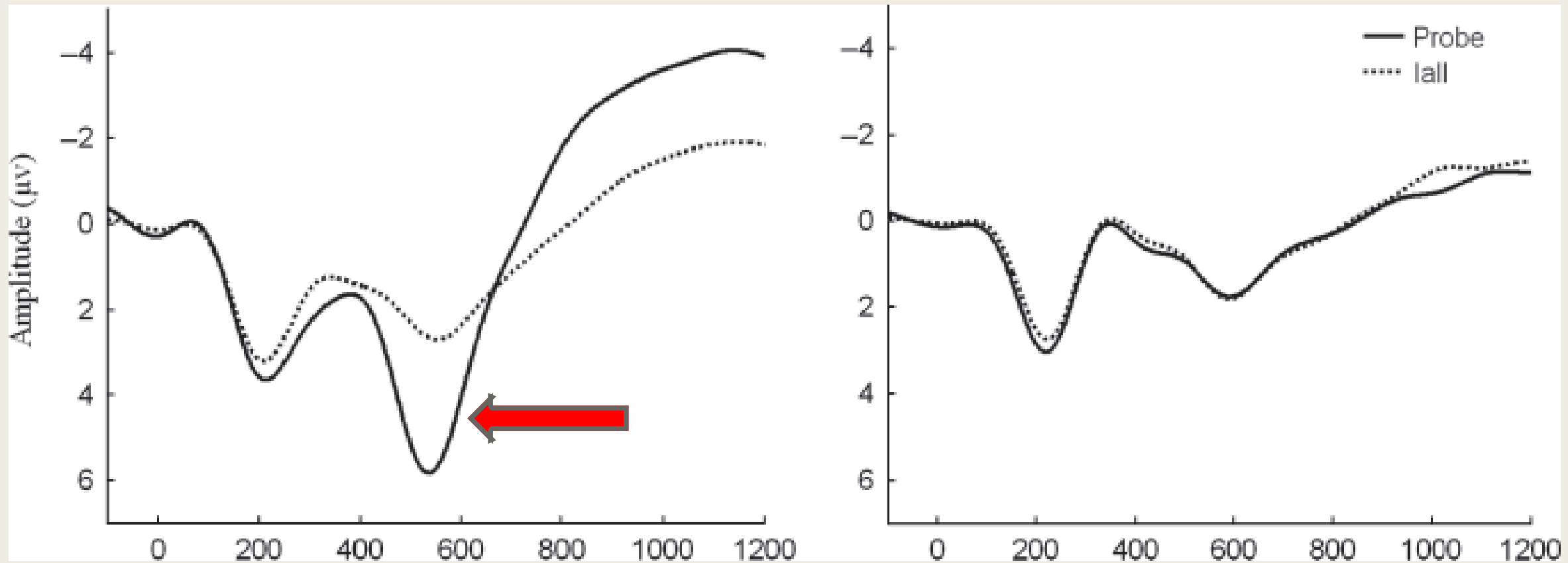
# Electrophysiology 101



# P300

Information Present in Knowledgeable Group

Information Absent in Non-Knowledgeable Group



(Meixner & Rosenfeld, 2011)



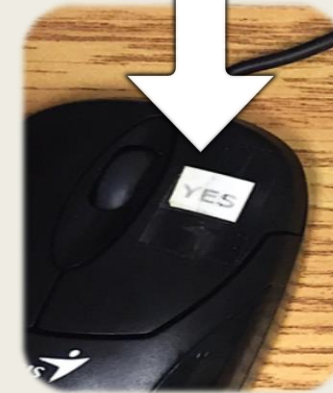
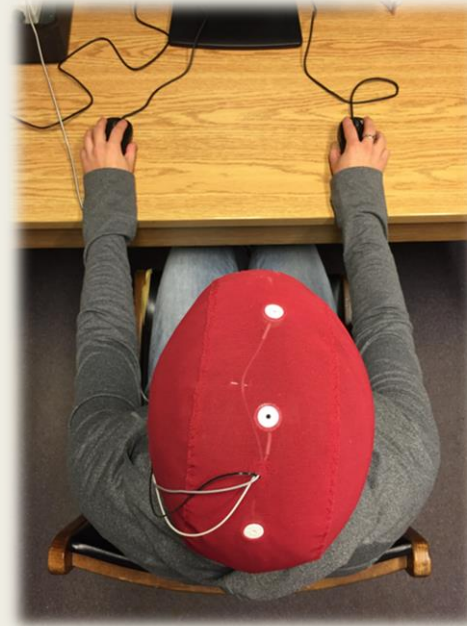
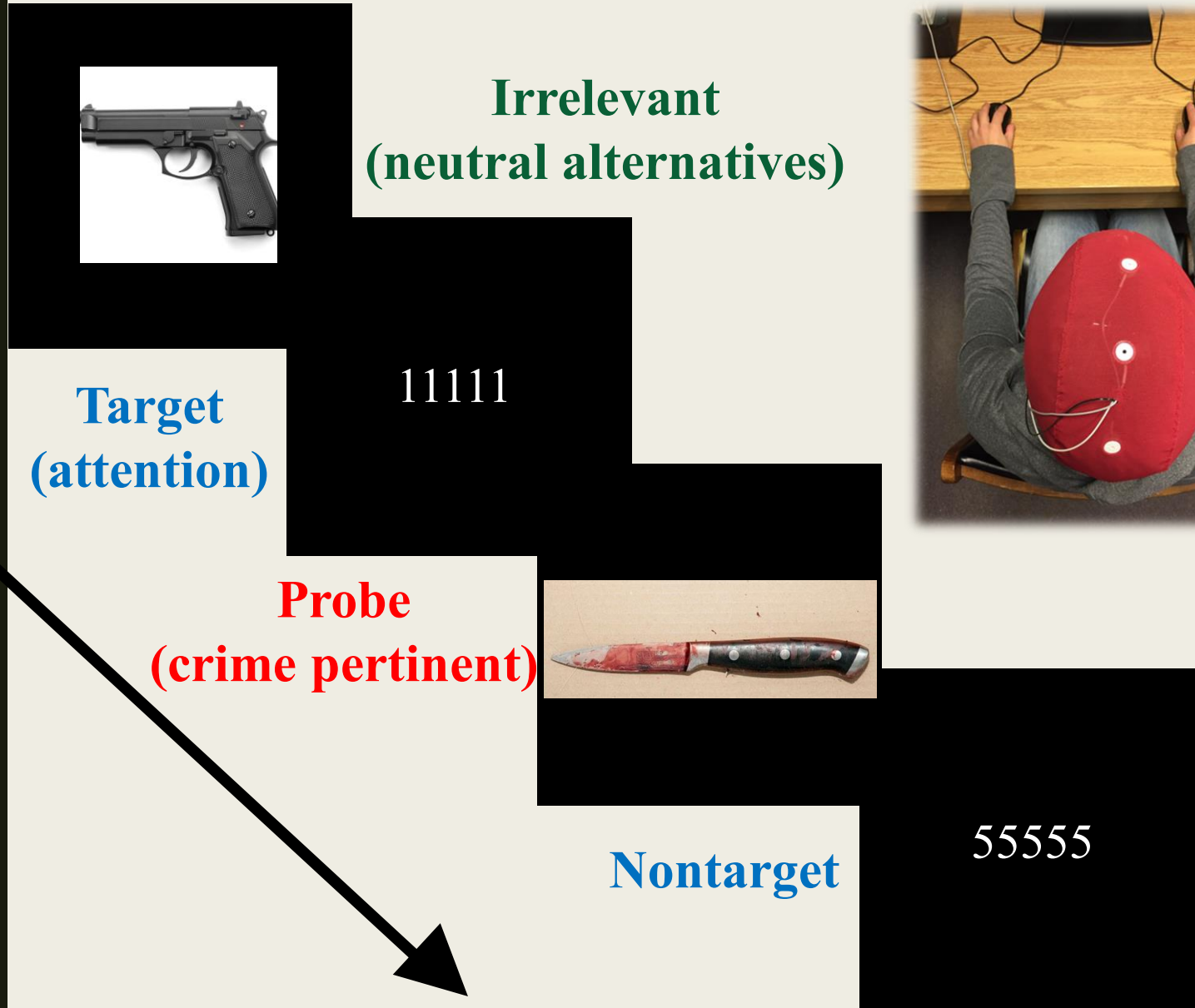
# Stimuli – Murder Weapon

Irrelevants

Probe



# Complex Trial Protocol



Left mouse



Right mouse





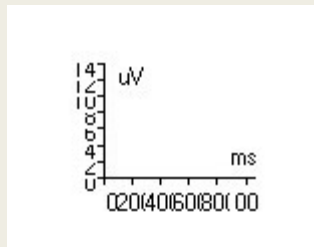
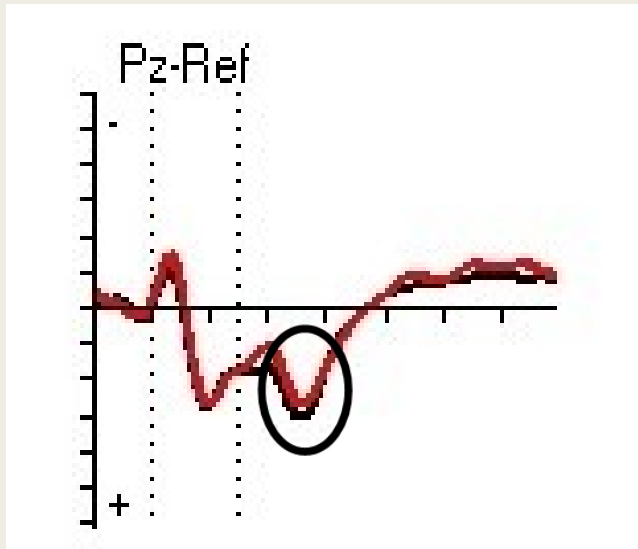
# EEG - CTP

- 7 electrodes
- Ground
- EOG x 1
- Mastoids x 2
- Fz, Cz, Pz
- 5 software

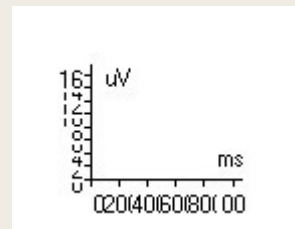
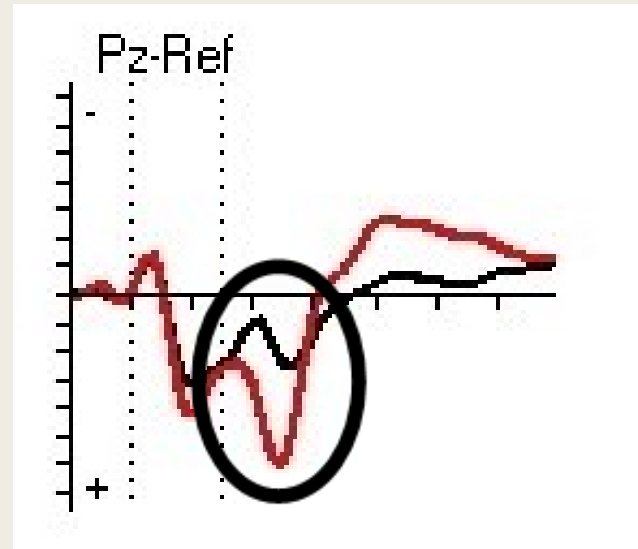


# Autobiographical Data – CTP Independent Validation

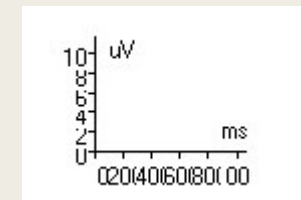
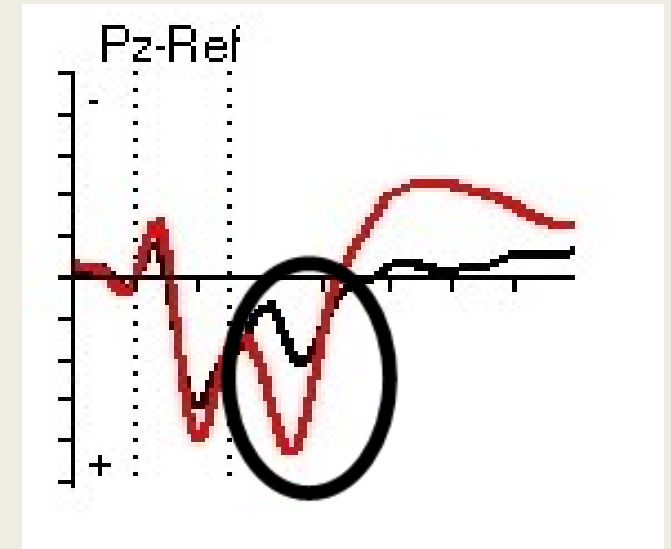
Innocent Control Group  
at Pz



Simply Guilty Group  
at Pz



Guilty Countermeasure Group  
at Pz

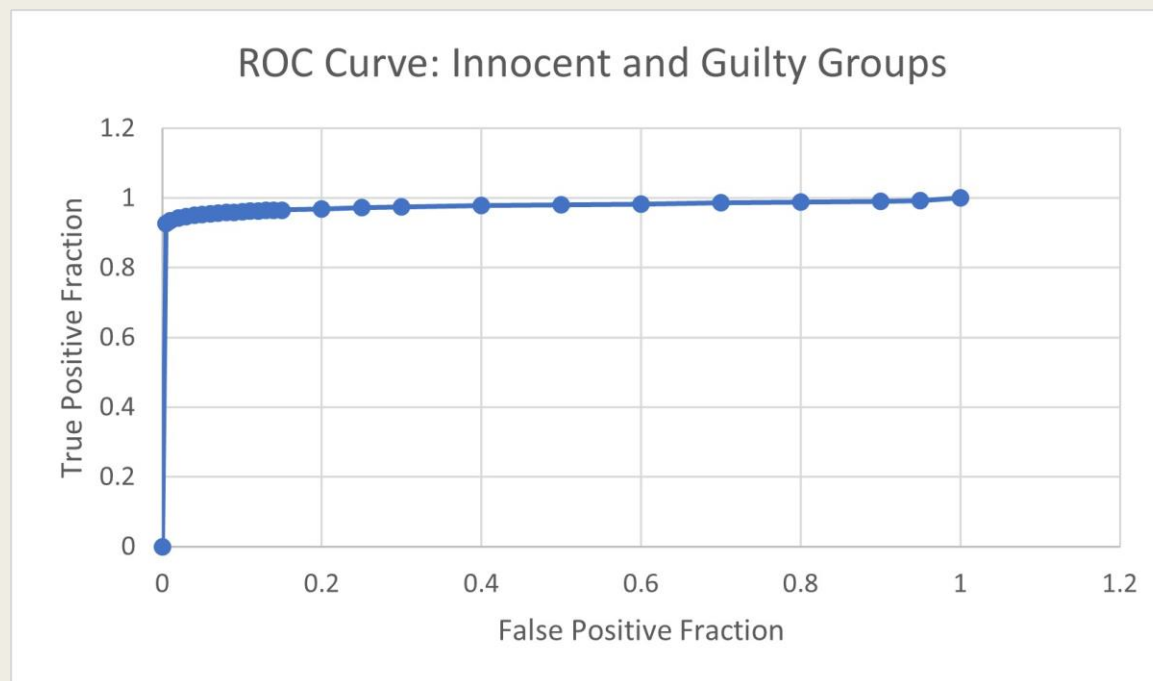


Positive plotted downward

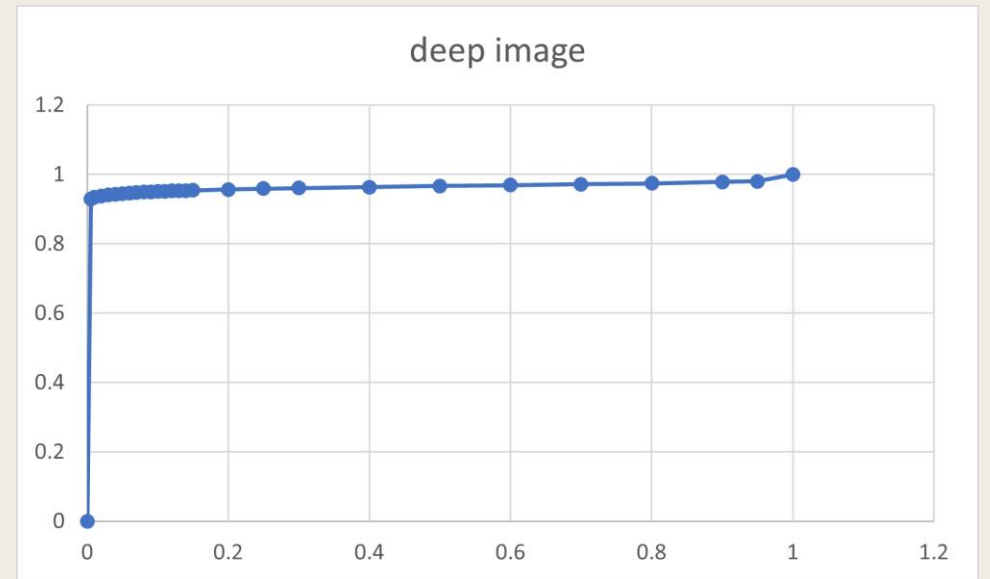
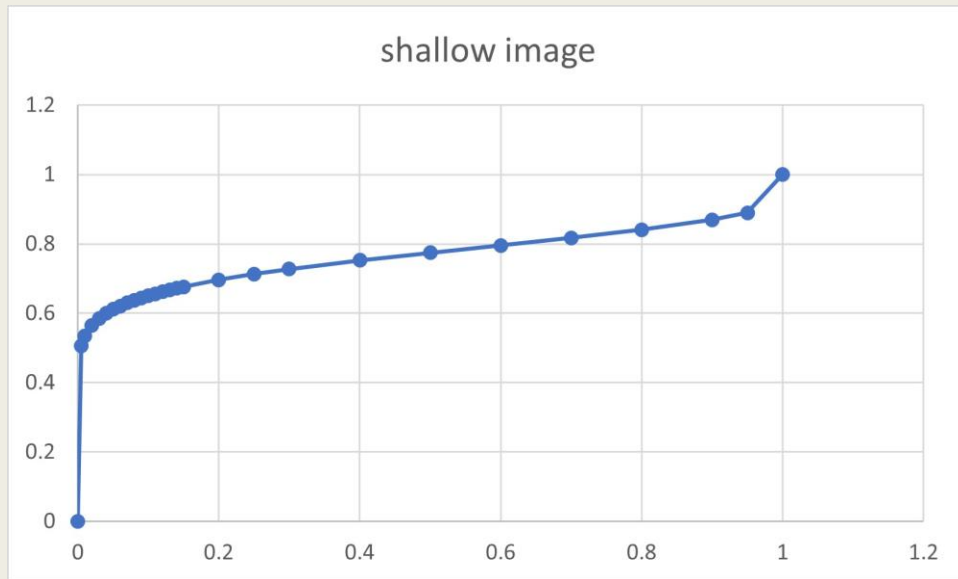
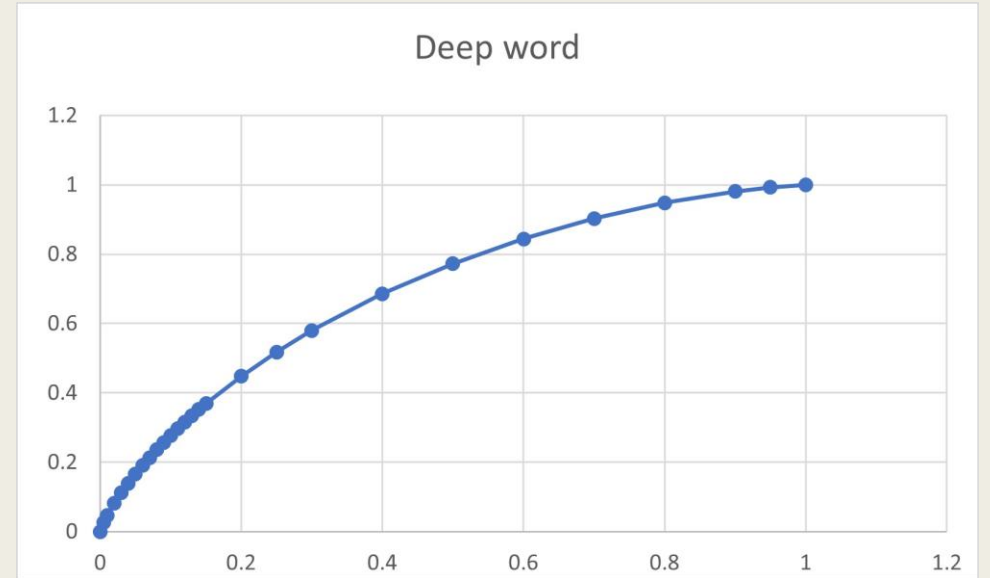
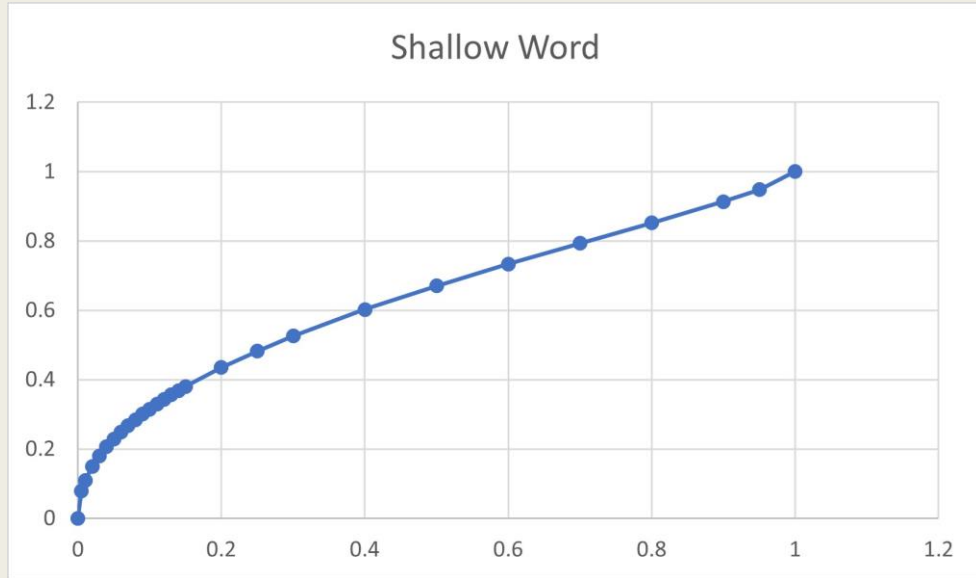
Probe —  
Irrelevant —

# Individual Classification Rates by Group

	IC	SG	GCM
Correct	(14/14) 100%	(15/16) 94%	(14/15) 93%
Incorrect	(0/14) 0%	(1/16) 6%	(1/15) 7%

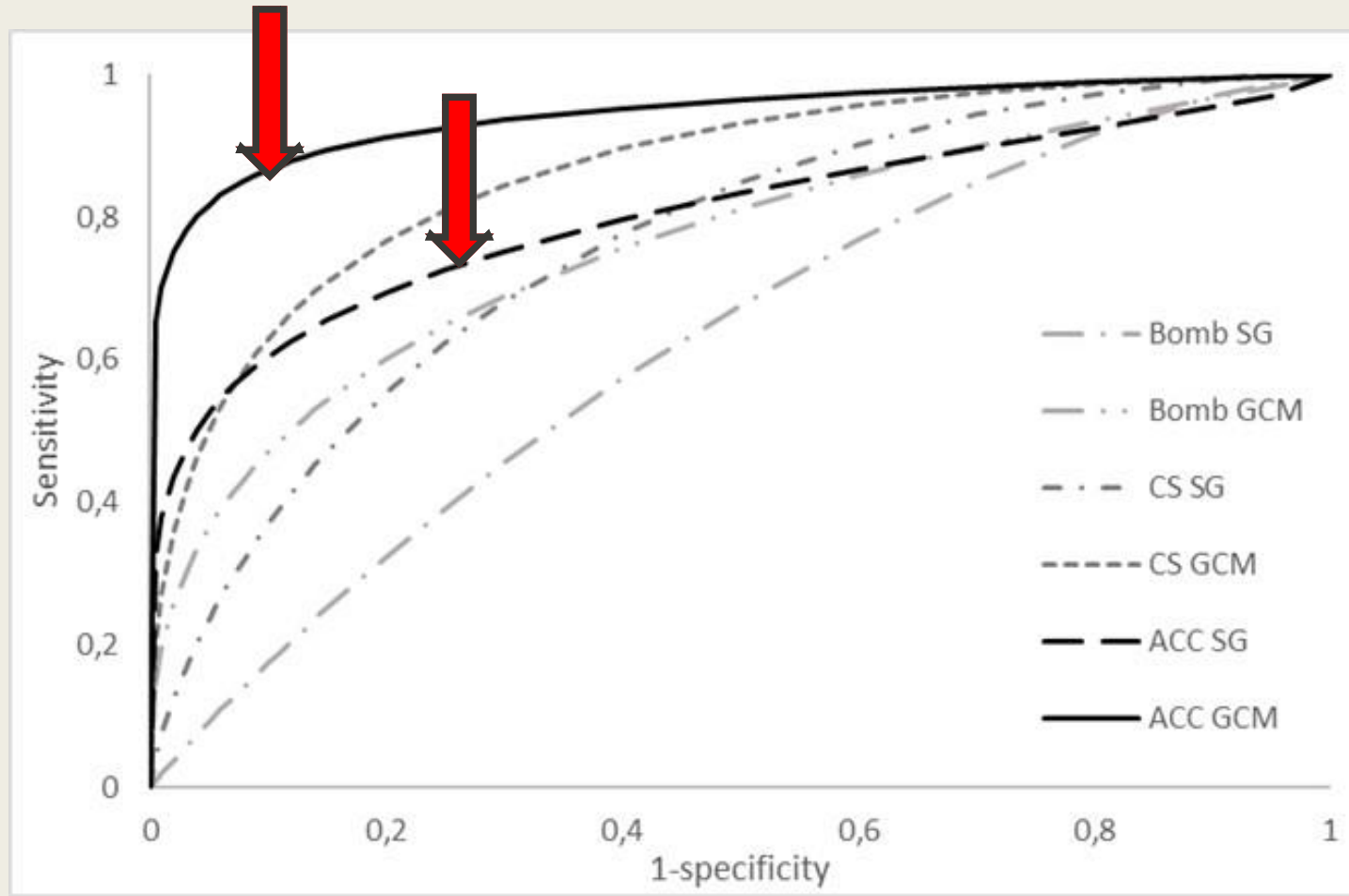


# Levels of Processing – Words & Images – Mock Theft





# Mock Terrorism Experience



- Face of Accomplice (hit rates 77% - SG to 93% GCM; AUC 81-94%)
- Crime Scene (hit rates 69% - SG to 93% GCM; AUC 74-87%)
- Explosive device (hit rates 54% - SG to 71% GCM; AUC 63-76%)

(Funicelli, et al., in preparation)

A close-up photograph of a high-visibility yellow and grey reflective vest. A prominent blue rectangular patch with the word "POLICE" in white, bold, sans-serif capital letters is centered on the chest area. The vest material has a textured, woven appearance with reflective strips visible at the edges.

**POLICE**

# Complex Trial Protocol Field Application

# Concealed Information Test

- Probe  
Crime relevant detail only known to author & authorities
- Examples of probe stimuli  
Wound pattern  
Face of suspect / victim  
Murder weapon  
Crime scene
- Irrelevants  
Neutral & plausible alternatives





# Stimuli - Facial

Irrelevants

Probe





- Police generally find physical evidence in 5-20% of criminal offences and crime scenes (except in cases of homicides and sexual assaults) (Baldwin & McConville, 1980, Horvath & Meesing, 1996, and Peterson et al, 2010)
- Memory is untapped source of probative evidence
- CTP can produce reliable & objective quantitative measure of memory recognition index (as opposed to subjective statements: *“I am pretty sure it’s him”*)
- Non-Choosers, Recanters & Cold Cases – CTP can produce a historical record of memory recognition index.

# Research Team – Concordia University



Simon Houle



Sarah Salphati



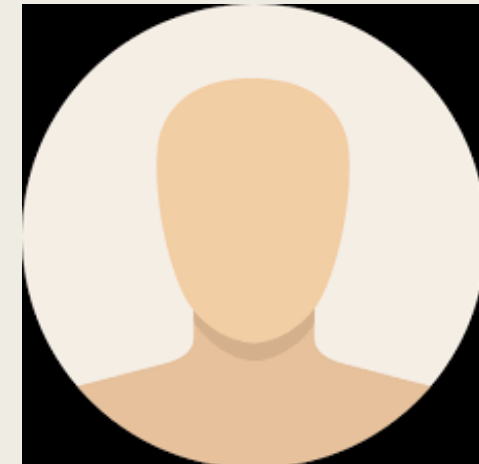
Lauren White



Yasmine Doré



Prof. Jean-Roch  
Laurence



Sabina Ungureanu

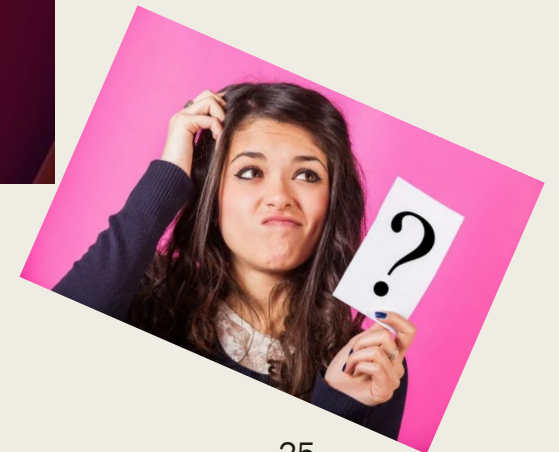


# You Tube Interview

## Podcast: Murder Was the Case

- [Interview with Dr. Michel Funicelli & Prof Robin Palmer](#)

Thank you



[michel.funicelli@canterbury.ac.uk](mailto:michel.funicelli@canterbury.ac.uk)